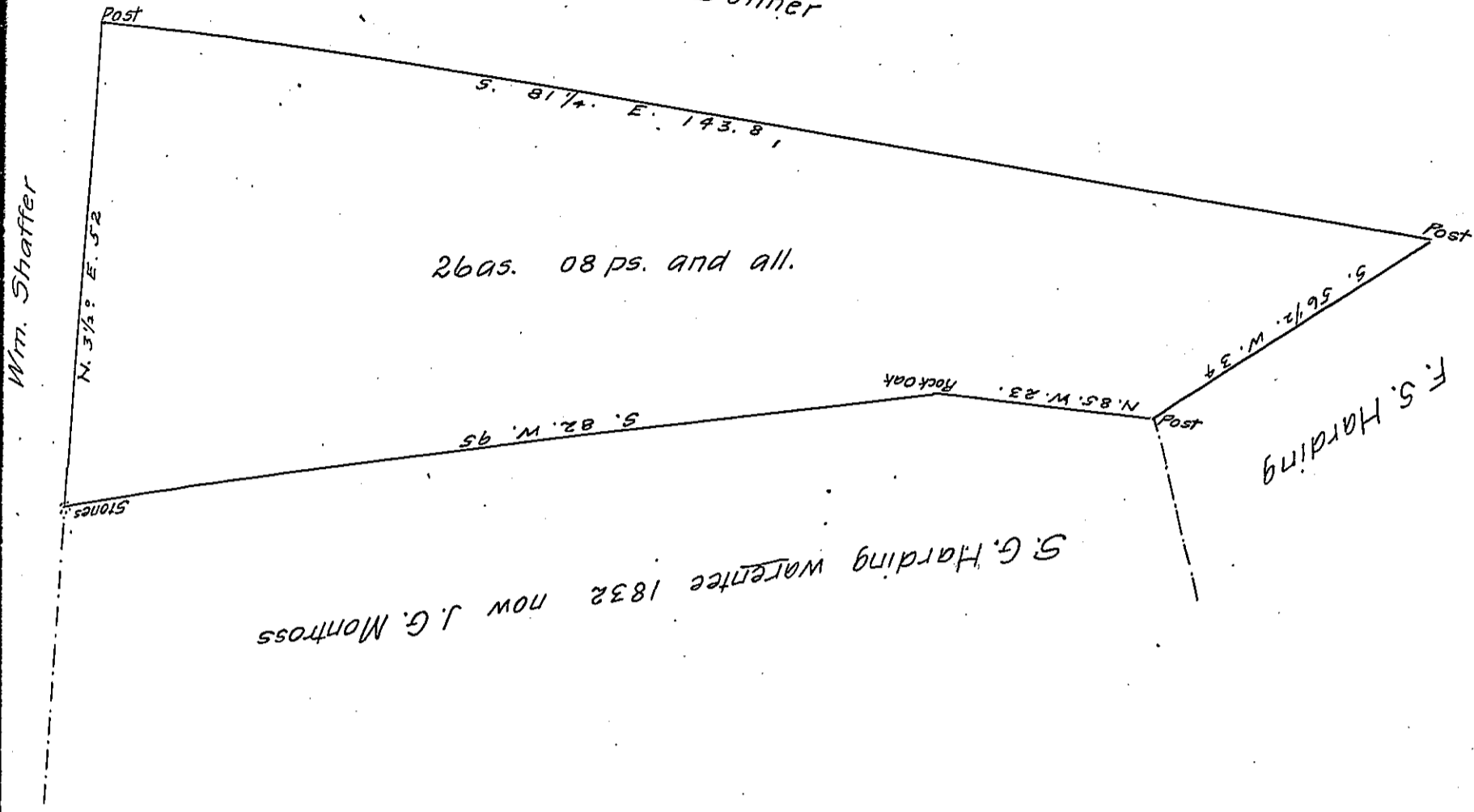


FORM No. 1.

D. Bonner



I hereby certify that the above is a correct copy of a survey made by Geo. W. Cooke Deputy for Harry J. Frear County Surveyor, filed amongst the records of the County Surveyors Office of Wyoming County and that it has been examined by me and found correct.

A Draft of a tract of land situated in the Township of Eaton and County of Wyoming, containing Twenty Six acres, Eight perches and allowance of six per cent. for roads, etc. Surveyed the ——— day of April 1890, in pursuance of a warrant granted to F. D. Miner dated the 7th day of April 1890.

F. V. Sickler

To James W. Latta, Esq.,
Secretary of Internal Affairs. } County Surveyor

IN TESTIMONY that the above is a copy of the original remaining on file in the Department of Internal Affairs of Pennsylvania, made conformably to an Act of Assembly approved the 16th day of February, 1833, I have hereunto set my Hand and caused the Seal of said Department to be affixed at Harrisburg, this thirtieth day of March 1906

Joseph D. Brown
Secretary of Internal Affairs.